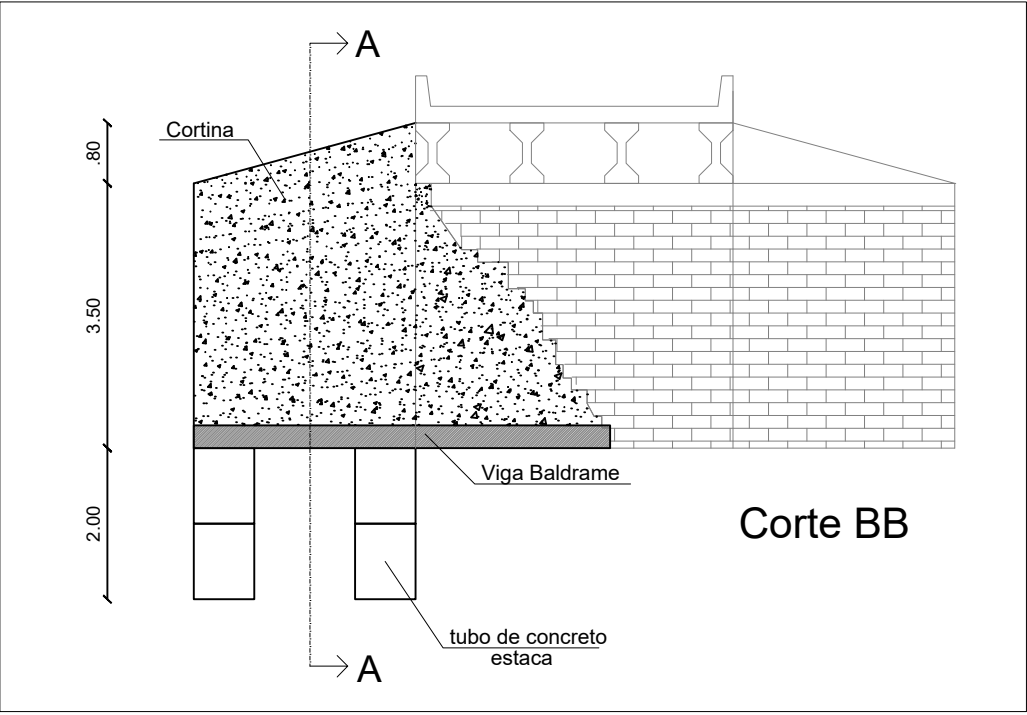
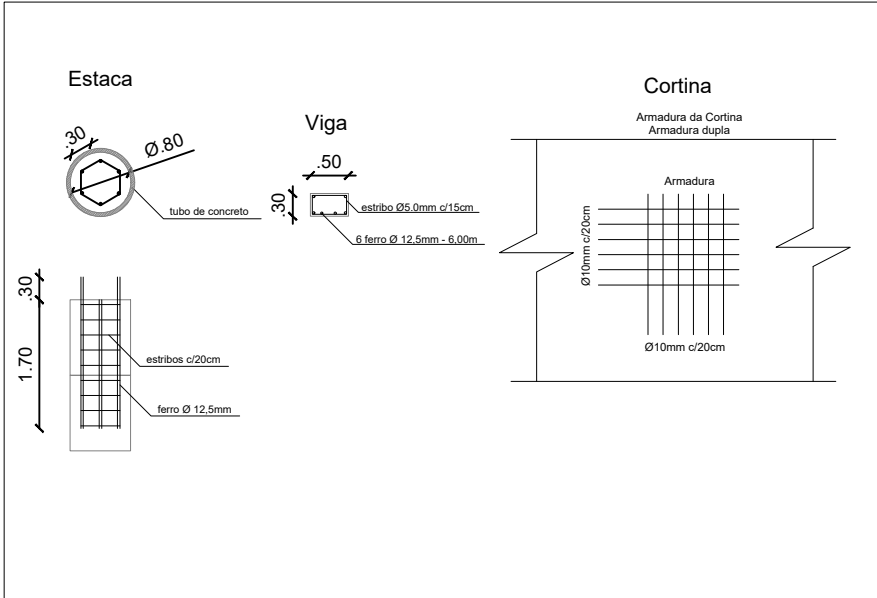
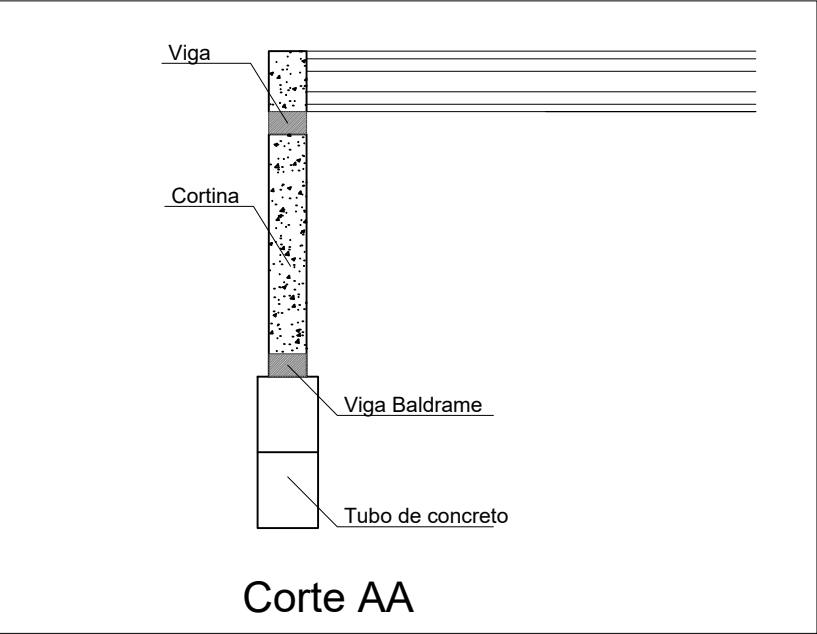
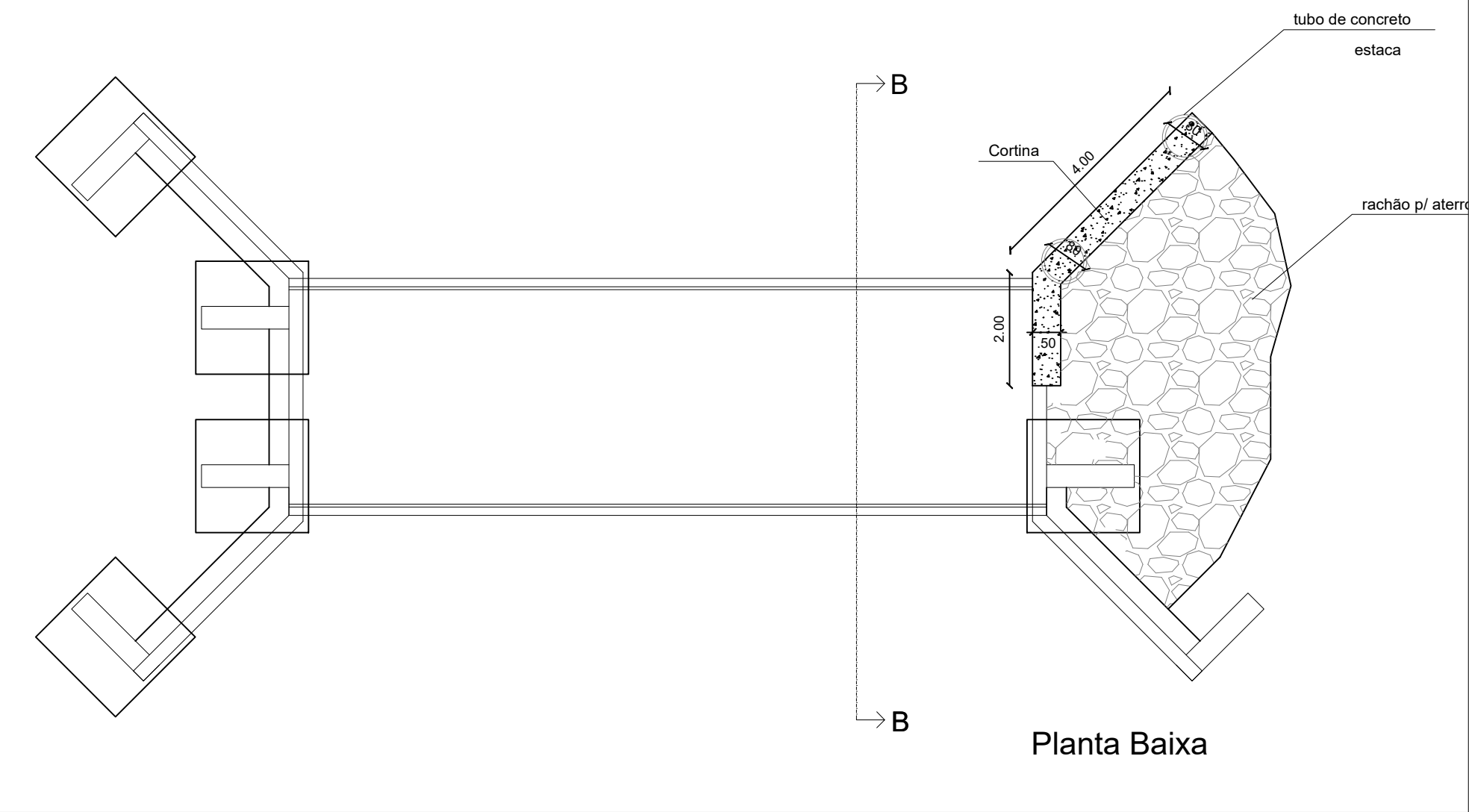


Ponte Binotto - Sobre o Arroio Bom Retiro



Cabeceira Ponte Ernesto Binotto sobre o arroio bom retiro

Prefeitura Municipal de Nova Palma - RS:			
Jucemara Rossato Prefeita Municipal			
Resp. Técnico: Crea/RS:			
Guilherme Simões Pires Eng. Civil CREA RS201.367			
Local: Planta Baixa, Corte AA, Corte BB e Corte CC			
Escala: 1:100		Data: 11/25	1